

# #10 Speed Spray Power Cleaner

**PRODUCT DESCRIPTION:**

Ultra concentrated, non-butyl spray and wipe multi-use power cleaner. An excellent heavy duty cleaner that quickly removes tough soils from washable hard surfaces. Safe for use on all hard surfaces, even engine blocks.

**FEATURES:**

**Cost Effective:**

One product removes ink marks, graffiti, grease and other soils on hard surfaces. For heavy soils dilute 1:10, medium soils dilute 1:16, and light soils dilute 1:32.

**Reduces Labor:**

One product replaces the need for multiple cleaners and simplifies training. Quickly removes many tough soils, including adhesives.

**Bi-Lingual Labeling:**

Product label and secondary use bottles provide directions in Spanish and English.

**Environmentally Friendly:**

Contains no "butyl". Non-flammable concentrate. Does not promote rust.

**PRODUCT SPECIFICATIONS:**

pH .....	11.0 ± 0.5
Appearance .....	Purple, Liquid
Physical State .....	Concentrated
Fragrance .....	Menthol
Freezing Point .....	About 32°F
Solubility in Water .....	Complete
Flash Point .....	205°F

**INGREDIENTS:**

Water .....	7732-18-5
NJ TSRN .....	100555-5002
Dipropylene glycol methyl ether ...	34590-94-8
Monoisopropanolamine .....	78-96-6
Alcohol ethoxylate .....	34398-01-1

DILUTIONS	HEALTH	FLAMMABILITY	REACTIVITY
CONCENTRATE CONCENTRAR	NFPA <b>3</b> HMIS	NFPA <b>0</b> HMIS	NFPA <b>0</b> HMIS
(1:10 RATIO) (1:10 RAZÓN)	NFPA <b>2</b> HMIS	NFPA <b>0</b> HMIS	NFPA <b>0</b> HMIS
PROPORCIÓN	SALUD	INFLAMABILIDAD	REACTIVIDAD

0	1	2	3	4
Minimal	Slight	Moderate	Serious	Severe
Mínimo	Mínimo	Moderar	Grave	Drástico

**ECOLOGICAL INFORMATION:**

- Biodegradable Surfactants • Contains No Phosphorus
- Concentrated; eliminates waste and provides source reduction.

DATA TECH SHEET

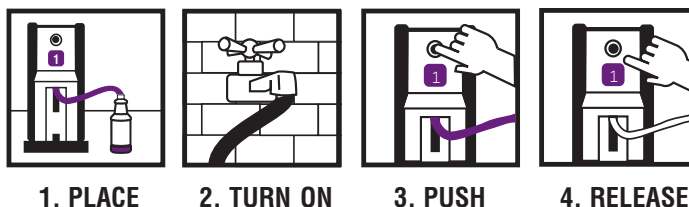
# #10 Speed Spray Power Cleaner **FAST ACTING, SPRAY AND WIPE CLEANER**

# DIRECTIONS

## USE INFORMATION:

For heavy soils dilute the product at 12 ounces per gallon (1:10 ratio), for medium soils dilute the product at 8 ounces per gallon (1:16 ratio), and for light soils dilute the product at 4 ounces per gallon (1:32 ratio). The Lightning Blend proportioner can be preset to deliver these ratios of mixed solution to a spray bottle. Use the diluted product as directed.

## UNIT DIRECTIONS



## UNIT DIRECTIONS

1. **PLACE** discharge tube into a spray bottle.
2. **TURN ON** the water supply.
3. **PUSH** in the button to dispense the solution.
4. **RELEASE** the button to stop the flow of the solution.

## DIRECTIONS FOR USE:

1. **SPRAY** surfaces from 6 to 12 inches away, using a fine mist. Spray on sparingly.
2. **WIPE** dry immediately with a clean, dry cloth or paper towel.

## PERSONAL PROTECTION:

- Respiratory Protection:** Required.  
**Ventilation:** Use with adequate ventilation.  
**Eye Protection:** Safety glasses are required.  
**Protective Gloves:** Protective gloves are required.  
**Other Protective Clothing or Equipment:** Wear clothing as necessary to prevent skin contact.



## FIRST AID:

**If in eyes or on skin,** immediately flush with plenty of water for at least 15 minutes while removing contaminated clothing. Get medical attention. **If inhaled,** remove to fresh air. Get medical attention. **If swallowed,** get medical attention. NEVER GIVE ANYTHING BY MOUTH TO AN UNCONSCIOUS PERSON.

## HANDLING AND STORAGE:

**SUGGESTED STORAGE TEMPERATURE:** Store inside at 40-90°F. **SPECIAL HANDLING AND STORAGE:** Handle in accordance with good industrial hygiene and safety practices. These practices include avoiding unnecessary exposure and removal of material from eyes, skin and clothing. Store in a cool, dry, ventilated area. Protect from freezing. Thoroughly rinse empty containers. **KEEP OUT OF REACH OF CHILDREN.**

## TRANSPORTATION INFORMATION:

- ONE GALLON OR SMALLER:**  
Consumer Commodity, ORM-D
- LARGER THAN ONE GALLON:**  
**U.S. DOT - Proper Shipping Name:** Corrosive Liquid, Basic, Inorganic, N.O.S. (Monoisopropanolamine)  
**Hazard Class:** 8  
**ID Number:** UN 3266  
**Packing Group:** III  
**Marine Pollutant:** No

**MSDS RETRIEVAL**  
Read MSDS before using this product  
**800-848-4901**  
OBTENCIÓN DE HDSM  
Leer la HDSM antes de utilizar este producto

FOR CHEMICAL EMERGENCY,  
SPILL, LEAK, FIRE, EXPOSURE OR ACCIDENT  
CALL CHEMTREC DAY OR NIGHT  
**800-424-9300**  
PARA EMERGENCIAS QUÍMICA DERRAMES,  
ESCAPES, FUEGO, EXPOSICIÓN O ACCIDENTE  
LLAMAR DE DÍA O DE NOCHE A CHEMTREC

**TECH HOTLINE**  
**800-810-4829**  
**LINEA DE TÉCNICA**