

# #11 Restroom Cleaner

DATA TECH SHEET

**PRODUCT DESCRIPTION:**

Lightning Blend #11 Restroom Cleaner is a citric acid based, non-abrasive liquid that safely dissolves away soils, hardened film, scale and light rust. It's clinging properties allow longer contact time on walls and other vertical surfaces for more effective cleaning. This Green Certified natural citric acid formula is less harsh on surfaces and safer to use than traditional acidic restroom cleaners.

**FEATURES:**

**Powerful:**

Citric acid formula easily removes soils from restroom fixtures and surfaces.

**Concentrated:**

One gallon makes 8 gallons of ready-to-use cleaning solution.

**Effective:**

Cleans as well as mineral acids, but without the harsh fumes and skin corrosivity.

**Versatile:**

Can be used on a wide variety of restroom surfaces for safe and effective soil removal.

**PRODUCT SPECIFICATIONS:**

% Acid .....	8.5 ± 0.5
Appearance .....	Light Blue Liquid
Fragrance .....	None Added
Solubility in Water .....	Complete
Flash Point .....	None

**INGREDIENTS**

Water .....	7732-18-5
Lauramine oxide .....	.1643-20-5
Citric acid .....	.77-92-9
Dipropylene glycol n-butyl ether ..	.29911-28-2
Lactic acid .....	.50-21-5

DILUTIONS	HEALTH	FLAMMABILITY	REACTIVITY
CONCENTRATE	NFPA 1 HMIS	NFPA 0 HMIS	NFPA 0 HMIS
(1:8 RATIO) (1:8 RAZÓN)	NFPA 1 HMIS	NFPA 0 HMIS	NFPA 0 HMIS
PROPORCIÓN	SALUD	INFLAMABILIDAD	REACTIVIDAD

0	1	2	3	4
Minimal	Slight	Moderate	Serious	Severe
Mínimo	Mínimo	Moderar	Grave	Drástico



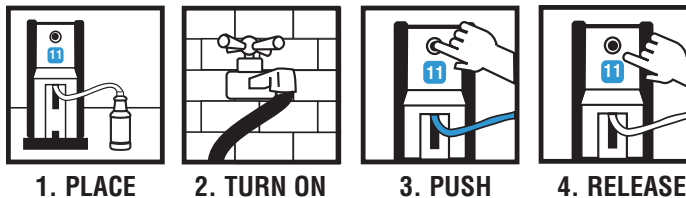
Recognized for Safer Chemistry  
[www.epa.gov/dfe](http://www.epa.gov/dfe)

# #11 Restroom Cleaner Lightning Blend System

DIRECTIONS

## USE INFORMATION:

Dilute the product at 1:8 (16 ounces per gallon of **COLD** water). The Lightning Blend proportioner is preset to deliver this ratio of mixed solution to a spray bottle. Use the diluted product as directed.



## UNIT DIRECTIONS:

1. **PLACE** discharge tube into a spray bottle.
2. **TURN ON** the **COLD** water supply.
3. **PUSH** in the button to dispense the solution.
4. **RELEASE** the button to stop the flow of the solution.

## DIRECTIONS FOR USE:

1. **SPRAY** surfaces from 6 to 12 inches away, using a fine mist. Spray on sparingly.
2. **SCRUB** surfaces using a cloth or sponge.
3. **WIPE DRY** with a clean cloth.

## FIRST AID:

**If in eyes**, flush immediately with cold water. Remove contact lenses. Continue flushing for 15 minutes holding eyelids apart. Get medical attention. **If swallowed**, promptly drink large quantities of water. Get medical attention. **NEVER GIVE ANYTHING BY MOUTH TO AN UNCONSCIOUS PERSON.**

## HANDLING AND STORAGE:

**SUGGESTED STORAGE TEMPERATURE:** Store inside at 40-90°F. **SPECIAL HANDLING AND STORAGE:** Handle in accordance with good industrial hygiene and safety practices. These practices include avoiding unnecessary exposure and removal of material from eyes, skin and clothing. Store in a cool, dry, ventilated area. Protect from freezing. Thoroughly rinse empty containers. **KEEP OUT OF REACH OF CHILDREN.**

## PERSONAL PROTECTION:

**Respiratory Protection:** Not needed in normal use.  
**Ventilation:** Use with adequate ventilation.  
**Eye Protection:** Safety glasses are optional.  
**Protective Gloves:** Protective gloves are optional.  
**Other Protective Clothing or Equipment:** Wear clothing as necessary to prevent skin contact.

## TRANSPORTATION INFORMATION:

**U.S. DOT - Proper Shipping Name:** Not restricted by DOT.  
**Marine Pollutant:** No

MSDS RETRIEVAL  
Read MSDS before using this product

800-848-4901

www.franklintechnology.com

OBTENCIÓN DE HDSM

Leer la HDSM antes de utilizar este producto

FOR CHEMICAL EMERGENCY,  
SPILL, LEAK, FIRE, EXPOSURE OR ACCIDENT  
CALL CHEMTREC DAY OR NIGHT

800-424-9300

PARA EMERGENCIAS QUÍMICA DERRAMES,  
ESCAPES, FUEGO, EXPOSICIÓN O ACCIDENTE  
LLAMAR DE DÍA O DE NOCHE A CHEMTREC

TECH HOTLINE  
800-810-4829  
LINEA DE TÉCNICA