



# Hydrogen Peroxide Multi-Purpose Cleaner

## Product Description:

An all purpose cleaner/degreaser formulated with biodegradable surfactants, citrus oils and hydrogen peroxide. This extremely versatile product can be used at two different dilution ratios to provide highly effective and reduced toxicity cleaning across a wide range of facility cleaning needs including glass, floors, spray and wipe cleaning, general degreasing, bathroom and shower room cleaning, tile and grout cleaning and restoration, carpet spotting and extraction, stainless steel cleaning and odor elimination. Packaged for use exclusively in the innovative, TRUMIX™ Chemical Management System.

## Features:

### One Product Cleaning System:

All water washable surfaces as well as carpet can be effectively cleaned with this product reducing the need to stock multiple SKU's.

### Safe:

This product provides very effective and safe cleaning without the toxicity and environmental concerns of traditional cleaner/degreasers.

## Product Specifications:

pH (concentrate) .....	4.5 ± 0.5
Appearance .....	Clear Liquid
Fragrance .....	None Added
Solubility in Water .....	Complete
Flash Point .....	150° F

## Ingredients:

NJ TSRN ..... 253266463-4

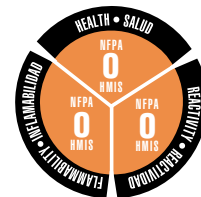
## Ecological Information:

- Biodegradable Surfactants
- Neutral pH
- Contains no Phosphorus
- Low VOC



"This product meets Green Seal's environmental standard for industrial and institutional cleaners based on its reduced human and aquatic toxicity and reduced smog production potential."

## End-Use Rating



0	1	2	3	4
Minimal	Slight	Moderate	Serious	Severe
Minimo	Minimo	Moderar	Grave	Drastico

## Use Information:

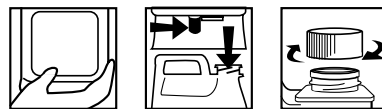
The TRUMIX™ bottle is preset to deliver a 1:128 ratio of Solution in the Low Flow operation and 1:26 ratio of solution in the High Flow operation. Use the diluted product as directed according to the concentrate label.

### LOADING INSTRUCTIONS



DILUTIONS DILUCIÓN	
HIGH	26
LOW	128

### UNLOADING INSTRUCTIONS



### TRUMIX™ LOADING INSTRUCTIONS:

1. **REMOVE CAP**
2. **POSITION BOTTLE** with spout on right.
3. **INSERT BOTTLE** into dispenser until firmly seated.

### TRUMIX™ UNLOADING INSTRUCTIONS:

1. **GRASP** bottle by bottom.
2. **MOVE** release lever to right and pull bottle from unit.
3. **REPLACE CAP** and store bottle.

### DIRECTIONS FOR USE:

**DILUTE** 1 oz. per GALLON of COLD TAP WATER •  
Mopping for Restrooms and Heavily Soiled Floors •  
Medium Duty Spray and Wipe Applications • Carpet Spot  
Remover and Extraction Solution

**DILUTE** 5 oz. per GALLON of COLD TAP WATER •  
Restroom Cleaner - Cleans and Deodorizes Urinals,  
Bowls, Counters and Fixtures, Shower and Locker Room  
Cleaner, Deodorizes and Removes Soap Scum and Oil  
from all Surfaces • Tile and Grout Cleaner • General  
Degreaser • Urinal and Garbage Odor Eliminator • Heavy  
Soil and Wipe-down Cleaner • Carpet Extraction  
Prespray and Heavy Spot Remover (extract with water)

## First Aid:

**If in eyes**, flush immediately with cold water. Remove contact lenses. Continue flushing for 15 minutes holding eyelids apart. Get medical attention. **If on skin**, immediately wash with plenty of soap and water. Get medical attention. **If swallowed**, promptly drink large quantities of water. medical attention. Avoid alcohol. Do NOT induce vomiting. NEVER GIVE ANYTHING BY MOUTH TO AN UNCONSCIOUS PERSON.

## Handling and Storage:

**SUGGESTED STORAGE TEMPERATURE:** Store inside at 40-90°F. **SPECIAL HANDLING AND STORAGE:** Handle in accordance with good industrial hygiene and safety practices. These practices include avoiding unnecessary exposure and removal of material from eyes, skin and clothing. Store in a cool, dry, ventilated area. **Protect from freezing.** Thoroughly rinse empty containers. **Keep out of reach of children.**

## Personal Protection:

**Respiratory Protection:** Not needed under normal conditions.

**Ventilation:** Use with adequate ventilation.

**Eye Protection:** Safety glasses are recommended.

**Protective Gloves:** Protective gloves are recommended.

**Other Protective Clothing or Equipment:** Wear clothing as necessary to prevent skin contact.

## Transportation Information:

**U.S. DOT - Proper Shipping Name:** Not regulated by DOT.

**Marine Pollutant:** No