



GLASS CLEANER

Product Description:

Glass Cleaner is Green Seal™ certified to effectively clean safer for the environment. A highly concentrated cleaner that rapidly penetrates and dissolves smears, smoke film, insects, soil, finger marks and food stains from glass, plastic, Plexiglas®, chrome and other hard surfaces. Packaged for use exclusively in the innovative, TRUMIX Chemical Management System.

Features:

User Friendly:

Fast drying formula, cuts through film and grime quickly. It leaves surfaces sparkling clean with no streaks or smears. Quick easy cleaning reduces labor.

Cost Effective:

Multi-surface cleaner recommended for use on glass, windows, mirrors, plastic, Plexiglas®, metal and other hard surfaces. Reduces the number of cleaning products required and simplifies training.

Product Specifications:

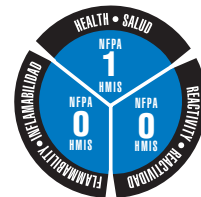
pH.....	6.8 ± 0.6
Appearance	Clear Blue Liquid
Fragrance	None Added
Solubility in Water.....	Complete
Flash Point	None

Ingredients:

Water	7732-18-5
NJ TSRN	100555-5002
Magnesium alkyl sulfate.....	3097-08-3
NJ TSRN	100555-5003



"This product meets the Green Seal™ environmental standard for industrial and institutional cleaners based on its reduced human and aquatic toxicity and reduced smog production potential."



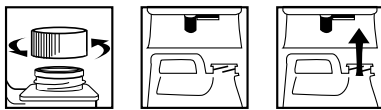
End-Use Rating

0	1	2	3	4
Minimal	Slight	Moderate	Serious	Severe
Minimo	Minimo	Moderar	Grave	Drastico

Use Information:

The TRUMIX® bottle is preset to deliver a 1:64 ratio of Glass Cleaner solution to any appropriate end use container. Use the diluted product as directed according to the concentrate label. Always dilute with COLD water.

LOADING INSTRUCTIONS



TRUMIX LOADING INSTRUCTIONS:

1. **REMOVE CAP**
2. **POSITION BOTTLE** with spout on right.
3. **INSERT BOTTLE** into dispenser until firmly seated.

TRUMIX UNLOADING INSTRUCTIONS:

1. **GRASP** bottle by bottom.
2. **MOVE** release lever to right and pull bottle from unit.
3. **REPLACE CAP** and store bottle.

DIRECTIONS FOR USE:

1. **DILUTE** at 2 ounces per gallon of cold water (1:64 ratio).
2. **SPRAY** a fine mist directly into cleaning cloth or onto the entire surface to be cleaned.
3. **WIPE and POLISH** the surface until dry with a clean lint free cloth or paper towel.

First Aid:

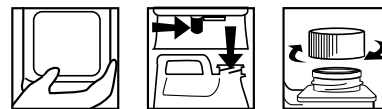
If in eyes or on skin, immediately flush with plenty of water. Get medical attention if irritation persists. **If swallowed**, get medical attention. NEVER GIVE ANYTHING BY MOUTH TO AN UNCONSCIOUS PERSON.

Handling and Storage:

SUGGESTED STORAGE TEMPERATURE: Store inside at 40-90°F.
SPECIAL HANDLING AND STORAGE: Handle in accordance with good industrial hygiene and safety practices. These practices include avoiding unnecessary exposure and removal of material from eyes, skin and clothing. Store in a cool, dry, ventilated area. **Protect from freezing.** Thoroughly rinse empty containers.
KEEP OUT OF REACH OF CHILDREN.

DILUTIONS DILUCIÓN	
HIGH	64
LOW	64

UNLOADING INSTRUCTIONS



INSTRUCCIONES DE CARGA:

1. **QUITE LA TAPA.**
2. **POSICIONE LA BOTELLA** con el pico a la derecha.
3. **INSERTE LA BOTELLA** dentro del dosificador y fíjela bien.

INSTRUCCIONES DE DESCARGA:

1. **AGARRE** la botella por la base.
2. **AFLOJE LA PALANCA** de soltar hacia la derecha y jale la botella hacia abajo.
3. **TAPE LA BOTELLA** y guárdela.

INSTRUCCIONES PARA SU USO:

1. **DILUIR** a razón de 2 onzas por galón de agua fría (proporción de 1:64).
2. **ROCÍE** una niebla fina directamente en el trapo de limpieza o sobre la superficie entera que se limpiará.
3. **PULIR y LIMPIAR** la superficie hasta secar con un paño libre de lanilla ó servilleta de papel.

Personal Protection:

Respiratory Protection: Not needed under normal conditions.
Ventilation: Use with adequate ventilation.
Eye Protection: Safety glasses are optional.
Protective Gloves: Protective gloves are optional.
Other Protective Clothing or Equipment: Wear clothing as necessary to prevent skin contact.

Transportation Information:

U.S. DOT - Proper Shipping Name: Not required by DOT.
Marine Pollutant: No