



INDUSTRIAL CLEANER/DEGREASER

Product Description:

Industrial Cleaner/Degreaser is a powerful blend of high pH detergents, alkaline builders and solvents that make it a fast-acting, hard working cleaner for tough problems. It is low foaming, which makes this an excellent product for use in automatic floor scrubbers. Packaged for use exclusively in the innovative, TRUMIX® Chemical Management System.

Features:

Alkaline Builders:

Breaks up industrial type greases and oils for easy removal. It is formulated with biodegradable surfactants and has a low VOC content.

Powerful Detergents:

Safe and effective removal of normal soils yet powerful enough for the heaviest industrial soils.

Product Specifications:

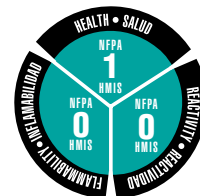
pH (concentrate)	12.8 ± 0.2
Appearance	Clear Blue-Green Liquid
Fragrance	Sassafras
Solubility in Water	Complete
Flash Point	None

Ingredients:

Water	7732-18-5
Nonyl phenoxy poly (ethylene oxy) ethanol	9016-45-9
2-Butoxyethanol	111-76-2
Trisodium phosphate	7601-54-9
Tetrapotassium pyrophosphate	7320-34-5
Sodium alkyl olefin sulfonate	68439-57-6

ECOLOGICAL INFORMATION:

- Biodegradable Surfactants
- 100% Recyclable Package



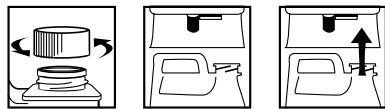
End-Use Rating

0	1	2	3	4
Minimal	Slight	Moderate	Serious	Severe
Minimo	Minimo	Moderar	Grave	Drastico

Use Information:

The TRUMIX® bottle is preset to deliver a 1:64 ratio of Industrial Cleaner/Degreaser solution to any appropriate end use container. Use the diluted product as directed according to the concentrate label.

LOADING INSTRUCTIONS



TRUMIX LOADING INSTRUCTIONS:

1. **REMOVE CAP**
2. **POSITION BOTTLE** with spout on right.
3. **INSERT BOTTLE** into dispenser until firmly seated.

TRUMIX UNLOADING INSTRUCTIONS:

1. **GRASP** bottle by bottom.
2. **MOVE** release lever to right and pull bottle from unit.
3. **REPLACE CAP** and store bottle.

DIRECTIONS FOR USE:

1. **DILUTE** 2 ounces per gallon of cold water (1:64 ratio).
2. **APPLY** using an automatic scrubber, mop, sprayer, brush, dip tank, or pressure washer. Let the solution work for a minute, but do not let dry.
3. **RINSE** by dry mopping with a clean mop or by flooding. All food preparation areas and food contact surfaces require a potable water rinse.
4. **WIPE** spray applications with a clean cloth.

Special Precautions: Not for use on non-ferrous metals such as untreated aluminum, brass, copper or on glass.

First Aid:

If in eyes or on skin, immediately flush with plenty of water. Get medical attention if irritation persists. **If swallowed**, get medical attention. NEVER GIVE ANYTHING BY MOUTH TO AN UNCONSCIOUS PERSON.

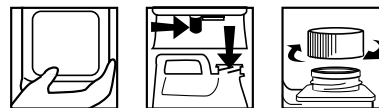
Handling and Storage:

SUGGESTED STORAGE TEMPERATURE: Store inside at 40-90°F.
SPECIAL HANDLING AND STORAGE: Handle in accordance with good industrial hygiene and safety practices. These practices include avoiding unnecessary exposure and removal of material from eyes, skin and clothing. Store in a cool, dry, ventilated area. **Protect from freezing.** Thoroughly rinse empty containers. **Keep out of reach of children.**

DILUTIONS DILUCIÓN

HIGH	64
LOW	64

UNLOADING INSTRUCTIONS



INSTRUCCIONES DE CARGA:

1. **QUITE LA TAPA.**
2. **POSICIONE LA BOTELLA** con el pico a la derecha.
3. **INSERTE LA BOTELLA** dentro del dosificador y fjela bien.

INSTRUCCIONES DE DESCARGA:

1. **AGARRE** la botella por la base.
2. **AFLOJE LA PALANCA** de soltar hacia la derecha y jale la botella hacia abajo.
3. **TAPE LA BOTELLA** y guárdela.

INSTRUCCIONES PARA SU USO:

1. **DILUYA** 2 onzas por galón de agua fría (proporción 1:64).
2. **APLICAR** usando un fregador automático, trapeador, rociador, cepillo, tanque para remojar o lavadora a presión. Deja que la solución trabaje durante un minuto, pero no deje que se seque.
3. **ENJUAGUE** secando con un trapeador limpio o remo jándolo bien. Todas las áreas de preparación de alimentos y superficies de preparación de alimentos requieren ser enjuagadas con agua potable.
4. **LIMPIE** las aplicaciones de rocío con un paño limpio.

No debe ser usado en metales no ferrosos tales como aluminio sin tratar, latón, cobre o sobre cristales.

Personal Protection:

Respiratory Protection: Not needed under normal conditions.

Ventilation: Use with adequate ventilation.

Eye Protection: Safety glasses are optional.

Protective Gloves: Protective gloves are optional.

Other Protective Clothing or Equipment: Wear clothing as necessary to prevent skin contact.

Transportation Information:

U.S. DOT - Proper Shipping Name: Not restricted by DOT.

Marine Pollutant: No