



ANSWER™ CARPET Prespray/Spotter

Product Description:

Answer™ Carpet Prespray/Spotter works aggressively to release carpet soils as a spotter and a pre-spray. This unique formulation satisfies many carpet cleaning requirements and provides safe/carefree maintenance of carpets. As a spotter it removes tough soils such as food, pet stains and even dirty motor oil. As a pre-spray it brings these tough soils away from the carpet fibers without leaving a residue that can attract soils. Answer™ Carpet Prespray/Spotter is formulated with a fresh apple scent. Packaged for use exclusively the innovative, TRUMIX® Chemical Management System.

Features:

Safe to Use:

Contains no solvents or harsh alkalis. It has a neutral pH and is approved by Wool's of New Zealand and Collins & Aikman.

Environmentally Focused:

Ultra concentrated biodegradable formula reduces packaging and eliminates solvent spotters.

Free Rinsing:

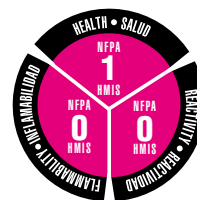
Easily rinses tough soils away from carpet fibers. Contains no components that void the new generation “stain resistant” carpet warranties. Its low foaming properties make carpet cleaning easy and efficient.

Product Specifications:

pH (concentrate)	8.0 ± 0.5
Appearance	“Apple Cider” or Light Brown
Fragrance	Fresh Apple
Solubility in Water	Complete
Flash Point	None

Ingredients:

Water	7732-18-5
Tetrasodium EDTA	64-02-8
NJ TSRN	100555-5004
NJ TSRN	027586004-8003P
Dicarboxylic acid	53980-88-4



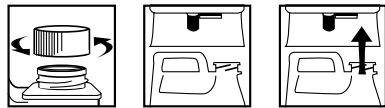
End-Use Rating

0	1	2	3	4
Minimal	Slight	Moderate	Serious	Severe
Minimo	Minimo	Moderar	Grave	Drastico

Use Information-

Always thoroughly vacuum the carpet and remove any attached deposits prior to use. If there is a question about the carpet's colorfastness, always pre-test in an inconspicuous area. The TRUMIX™ bottle is preset to deliver a 1:64 ratio of Answer™ Carpet Prespray/Spotter solution in the "bucket fill" mode and a 1:32 ratio of product in the "quart fill" mode. Use the diluted product as directed according to the concentrate label.

LOADING INSTRUCTIONS



TRUMIX LOADING INSTRUCTIONS

1. **REMOVE CAP**
2. **POSITION BOTTLE** with spout on right.
3. **INSERT BOTTLE** into dispenser until firmly seated.

TRUMIX UNLOADING INSTRUCTIONS

1. **GRASP** bottle by bottom.
2. **MOVE** release lever to right and pull bottle from unit.
3. **REPLACE CAP** and store bottle.

DIRECTIONS FOR USE

PRE-SPRAY

1. **DILUTE** at 2 ounces per gallon (1:64 ratio) of cold water.
2. **PRE-SPRAY** the carpet using a tank sprayer or electric sprayer. Allow a 15 minute dwell time for maximum results.
3. **EXTRACT or SPIN CLEAN** with Answer™, then force dry the carpet.

SPOTTER

1. **DILUTE** at 4 ounces per gallon (1:32 ratio) of cold water.
2. **SPRAY** the outer edges of the stain first, then center of stain.
3. **BLOT & RINSE:** Blot with a clean cloth and rinse with clean water, then repeat blotting.

First Aid-

If in eyes or on skin, immediately flush with plenty of water for at least 15 minutes. Get medical attention. **If swallowed,** get medical attention. NEVER GIVE ANYTHING BY MOUTH TO AN UNCONSCIOUS PERSON.

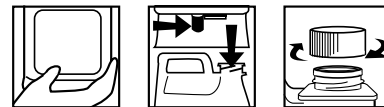
Handling and Storage-

SUGGESTED STORAGE TEMPERATURE: Store inside at 40-90°F.

SPECIAL HANDLING AND STORAGE: Handle in accordance with good industrial hygiene and safety practices. These practices include avoiding unnecessary exposure and removal of material from eyes, skin and clothing. Store in a cool, dry, ventilated area. **Protect from freezing.** Thoroughly rinse empty containers. **Keep out of reach of children.**

DILUTIONS DILUCIÓN	
HIGH	64
LOW	32

UNLOADING INSTRUCTIONS



INSTRUCCIONES DE CARGA

1. **QUITE LA TAPA.**
2. **POSICIONE LA BOTELLA** con el pico a la derecha.
3. **INSERTE LA BOTELLA** dentro del dosificador y fíjela bien.

INSTRUCCIONES DE DESCARGA

1. **AGARRE** la botella por la base.
2. **AFLOJE LA PALANCA** de soltar hacia la derecha y jale la botella hacia abajo.
3. **TAPE LA BOTELLA** y guárdela.

INSTRUCCIONES PARA SU USO

PRE-ROCIADO

1. **DILUIR** 2 onzas por galón (una proporción 1:64) de agua fría.
2. **PRE-ROCIAR** la alfombra usando el tanque rociador ó el rociador eléctrico. Para obtener máximos resultados permitirle 15 minutos para que actúe.
3. **EXTRAER O USAR EL LIMPIADOR ROTATORIO** con Answer™, entonces forzar el secado.

DESMANCHADO

1. **DILUIR** 4 onzas por galón (una proporción 1:32) de agua fría.
2. **ROCIAR** las orillas de la mancha primero luego el centro de la mancha.
3. **SECAR Y ENJUAGAR:** Enjuagar con agua limpia y secar con un paño limpio, entonces repetir el secado.

Personal Protection-

Respiratory Protection: Not needed under normal conditions.

Ventilation: Use with adequate ventilation.

Eye Protection: Safety glasses are recommended.

Protective Gloves: Protective gloves are optional.

Other Protective Clothing or Equipment: Wear clothing as necessary to prevent skin contact.

Transportation Information-

U.S. DOT - Proper Shipping Name: Not regulated by DOT.

Marine Pollutant: No