



CLEARINSE® PLUS Foaming Degreaser

Product Description-

Clearinse® Plus is a heavy-duty foaming cleaner/degreaser for use in meat rooms and other food processing areas. Applied with a "TRUMIX® F" foam unit, the cleaning foam will effectively emulsify grease and loosen other soils. The soils can then be easily rinsed away, leaving a clean, residue free surface. Clearinse® Plus can be applied with a spray bottle, foam unit, or in a mop and bucket. The highly effective grease cutting foam can be used on equipment, walls, floors, display cases, utensils, etc. Packaged for use exclusively in the innovative, TRUMIX® Chemical Management System.

Features-

Powerful-

Special blend of synthetic detergents, builders and emulsifiers remove even the toughest grease. Completely emulsified soil is easily rinsed away with clear water, leaving the surface clean and residue free.

High Foaming-

Concentrated formula provides rich foam which clings to surfaces, allowing active ingredients to penetrate and emulsify soil for easy removal.

Product Specifications-

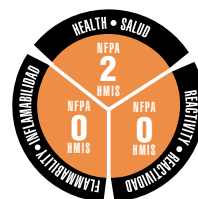
pH (concentrate)	13.25 ± 0.35
Appearance	Clear Orange Liquid
Fragrance	Solvent
Freezing Point	About 32°F
Solubility in Water	Complete
Flash Point	None

Ingredients-

Water	7732-18-5
Sodium xylene sulfonate	1300-72-7
Dipropylene glycol methyl ether	34590-94-8
Alkyl ether sulfate, sodium salt	73665-22-2
Potassium dodecylbenzene sulfonate	27177-77-1

Ecological Information-

- Biodegradable Surfactants
- Contains no Phosphorus
- Concentrated; eliminates waste and provides source reduction.



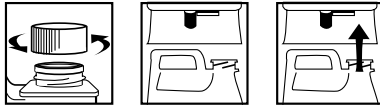
End-Use Rating

0	1	2	3	4
Minimal	Slight	Moderate	Serious	Severe
Minimo	Minimo	Moderar	Grave	Drastico

Use Information-

The TRUMIX® bottle is preset to deliver a 1:32 ratio of Clearinse® Plus solution to any appropriate end use container. Use the diluted product as directed according to the concentrate label.

LOADING INSTRUCTIONS



TRUMIX LOADING INSTRUCTIONS:

1. **REMOVE CAP**
2. **POSITION BOTTLE** with spout on right.
3. **INSERT BOTTLE** into dispenser until firmly seated.

TRUMIX UNLOADING INSTRUCTIONS:

1. **GRASP** bottle by bottom.
2. **MOVE** release lever to right and pull bottle from unit.
3. **REPLACE CAP** and store bottle.

DIRECTIONS FOR USE:

TRUMIX FOAMING UNIT

1. **ATTACH** Trumix Foaming Unit to top of Trumix bottle
2. **FOAM** the diluted product onto surface to be cleaned at 4 ounces per gallon of water (1:32 ratio). Use hot water for best results. Agitate with a brush as required.
3. **RINSE** with clean, hot potable water.

GENERAL CLEANING

1. **DILUTE** into spray bottle at 4 ounces per gallon of hot water (1:32 ratio).
2. **APPLY** the diluted product with sprayer. Agitate with a brush as required. On ovens or hoods use a spray bottle and wipe immediately. Soak dirty pans in the sink and rinse.
3. **RINSE** with clean, hot potable water. Squeegee excess water into a drain or pick up with a wet/dry vacuum. Do not use on glass.

First Aid-

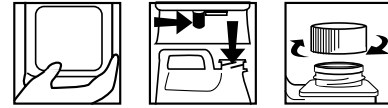
If in eyes or on skin, immediately flush with plenty of water for at least 15 minutes while removing contaminated clothing and shoes. Get medical attention. **If inhaled**, remove to fresh air, get medical attention. **If swallowed**, get medical attention. NEVER GIVE ANYTHING BY MOUTH TO AN UNCONSCIOUS PERSON.

Handling and Storage-

SUGGESTED STORAGE TEMPERATURE: Store inside at 40-90°F.
SPECIAL HANDLING AND STORAGE: Handle in accordance with good industrial hygiene and safety practices. These practices include avoiding unnecessary exposure and removal of material from eyes, skin and clothing. Store in a cool, dry, ventilated area. **Protect from freezing.** Thoroughly rinse empty containers. **Keep out of reach of children.**

DILUTIONS DILUCIÓN	
HIGH	32
LOW	32

UNLOADING INSTRUCTIONS



INSTRUCCIONES DE CARGA:

1. **QUITE LA TAPA.**
2. **POSICIONE LA BOTELLA** con el pico a la derecha.
3. **INSERTE LA BOTELLA** dentro del dosificador y fíjela bien.

INSTRUCCIONES DE DESCARGA:

1. **AGARRE** la botella por la base.
2. **AFLOJE LA PALANCA** de soltar hacia la derecha y jale la botella hacia abajo.
3. **TAPE LA BOTELLA** y guárdela.

INSTRUCCIONES PARA SU USO:

UNIDAD QUE HACE ESPUMA DE TRUMIX

1. **UNA LA UNIDAD** que hace espuma de Trumix a la tapa de la botella de Trumix.
2. **HACE ESPUMA** el producto diluido sobre la superficie que se limpiará en 4 onzas por el galón de agua (cociente 1:32). Utilice la agua caliente para los mejores resultados. Agite con un cepillo según lo requerido.
3. **ACLARACIÓN** con agua potable limpia, caliente.

LIMPIEZA GENERAL

1. **DILUYA** en la botella del aerosol en 4 onzas por galón de agua caliente (cociente 1:32).
2. **APLIQUE** el producto diluido con el rociador. Agite con un cepillo según lo requerido. En los hornos o las capillas utilice una botella del aerosol y límpiela inmediatamente. Empape las cacerolas sucias en el fregadero y aclárelas.
3. **ACLARACIÓN** con agua potable limpia, caliente. Exceso del agua del enjugador en un dren o toma con un vacío de wet/dry. No utilice sobre el cristal.

Personal Protection-

Respiratory Protection: Not needed under use of this product.

Ventilation: Use with adequate ventilation.

Eye Protection: Safety glasses are required.

Protective Gloves: Protective gloves are required.

Other Protective Clothing or Equipment: Wear clothing as necessary to prevent skin contact.

Transportation Information-

ONE GALLON OR SMALLER: Consumer Commodity, ORM-D.

LARGER THAN ONE GALLON:

U.S. DOT - Proper Shipping Name: Corrosive Liquid, Basic, Inorganic, N.O.S. (Potassium Hydroxide).

Hazard Class: 8

ID Number: UN 3266

Packing Group: III **Marine Pollutant:** No