

# LDD Liquid Dish Detergent

## Product Description:

LDD Liquid Dish Detergent is a concentrated formula that produces rich lasting suds. Removes and holds soils and grease away from dishes, glassware, pots and pans. Dishes dry without a greasy feel and with no streaks or spots. Mild to the hands. Packaged for use exclusively in the innovative, TRUMIX® Chemical Management System.

## Features:

### Excellent Cleaning & Detergency:

Penetrates grease and oil films, even baked on food soils on soaking. Special detergent system removes soils and holds grease and oil away from utensils.

### Lasting Suds:

Independent laboratory study proves that LDD Liquid Dish Detergent provides lasting suds. Professional strength formula requires only one fluid ounce to make a 4-gallon sink of dishwashing solution.

## Product Specifications:

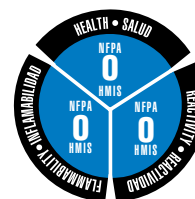
pH	7.5 ± 1.0
Appearance	Clear Blue Liquid
Fragrance	Light Floral
Freezing Point	About 32°F
Solubility in Water	Complete
Flash Point	None

## Ingredients:

Water	7732-18-5
Sodium dodecylbenzene sulfonate	25155-30-0
Sodium salt of lauryl ether sulfate	32612-48-9
Cocamide DEA	68603-42-9
Isopropyl alcohol	67-63-0

## Ecological Information:

- Biodegradable Surfactants
- Contains No Phosphorus
- No Solvents



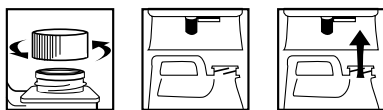
## End-Use Rating

0	1	2	3	4
Minimal	Slight	Moderate	Serious	Severe
Minimo	Minimo	Moderar	Grave	Drastico

## Use Information:

The TRUMIX® bottle is preset to deliver a 1:512 ratio of LDD solution to any appropriate end use container. Use the diluted product as directed according to the concentrate label.

### LOADING INSTRUCTIONS



### TRUMIX LOADING INSTRUCTIONS:

1. **REMOVE CAP**
2. **POSITION BOTTLE** with spout on right.
3. **INSERT BOTTLE** into dispenser until firmly seated.

### TRUMIX UNLOADING INSTRUCTIONS:

1. **GRASP** bottle by bottom.
2. **MOVE** release lever to right and pull bottle from unit.
3. **REPLACE CAP** and store bottle.

### DIRECTIONS FOR USE:

1. **DILUTE** 1 ounce per sink full (1 ounce per 4 gallons) of hot water. When the suds are used up, drain the sink and make a fresh sink.
2. **WASH** dishes clean with a clean dish cloth or scrub pots and pans clean with an abrasive pad.
3. **RINSE** dishes clean with potable water.

**Note:** If sanitation step is required, use AQ+ Sanitizer after washing with LDD.

## First Aid:

**If in eyes or on skin,** immediately flush with plenty of water. Get medical attention. **If swallowed,** get medical attention. NEVER GIVE ANYTHING BY MOUTH TO AN UNCONSCIOUS PERSON.

## Handling and Storage:

**SUGGESTED STORAGE TEMPERATURE:** Store inside at 40-90°F.

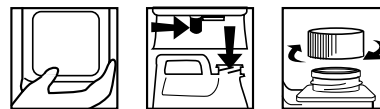
**SPECIAL HANDLING AND STORAGE:** Handle in accordance with good industrial hygiene and safety practices. These practices include avoiding unnecessary exposure and removal of material from eyes, skin and clothing. Store in a cool, dry, ventilated area.

**Protect from freezing.** Thoroughly rinse empty containers.

**Keep out of reach of children.**

DILUTIONS DILUCIÓN	
HIGH	512
LOW	512

### UNLOADING INSTRUCTIONS



### INSTRUCCIONES DE CARGA:

1. **QUITE LA TAPA.**
2. **POSICIONE LA BOTELLA** con el pico a la derecha.
3. **INSERTE LA BOTELLA** dentro del dosificador y fíjela bien.

### INSTRUCCIONES DE DESCARGA:

1. **AGARRE** la botella por la base.
2. **AFLOJE LA PALANCA** de soltar hacia la derecha y jale la botella hacia abajo.
3. **TAPE LA BOTELLA** y guárdela.

### INSTRUCCIONES PARA SU USO:

1. **DILUYA** a razón de una onza por cada fregadero lleno de agua caliente (1 onza por 4 galones). Cuando se acaba la espuma, vacíe el fregadero y llene nuevamente.
2. **LAVAR** los platos limpio con un trapo de fregar limpio o friegue las ollas y sartenes con un estropajo abrasivo.
3. **ENJUAGUE** los platos con agua potable.

**Nota:** Si se requiere el paso del saneamiento, utilice el Sanitizer de AQ+ después de limpiar con LDD.

## Personal Protection:

**Respiratory Protection:** Not needed under normal conditions.

**Ventilation:** Use with adequate ventilation.

**Eye Protection:** Safety glasses are optional.

**Protective Gloves:** Protective gloves are optional.

**Other Protective Clothing or Equipment:** Wear clothing as necessary to prevent skin contact.

## Transportation Information:

**U.S. DOT - Proper Shipping Name:** Not required by DOT.

**Marine Pollutant:** No