



# UHS COMBO CLEANER/MAINTAINER

## Product Description:

UHS Combo Cleaner/Maintainer is a revolutionary, labor saving product. Designed for daily use on resilient and hard floor surfaces. Revitalizes the finish base, builds gloss and reduces labor cost by eliminating the use of multiple products (traditional cleaners and restorers) and additional steps (separate deep cleaning and restoration steps). Packaged for use exclusively in the innovative, SHURFIL™ Chemical Management System.

## Features:

### Revitalizes:

Restores flexibility to the finish, allowing it to respond to burnishing and resulting in improved performance. Leaves the floor with a “just finished” appearance.

### Reduces Labor:

Reduces the frequency of stripping and scrub/recoating to save significant time and labor. Cleans and maintains the floor finish without trapping dirt which can build up and discolor the floor finish.

## Product Specifications:

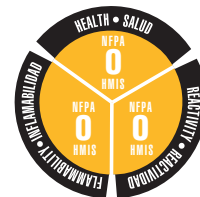
pH (concentrated) .....	9.0 ± 1.0
Appearance .....	Straw, Liquid
Fragrance .....	Citrus
Freezing Point .....	About 32°F
Solubility in Water .....	Complete
Flash Point .....	None

## Ingredients:

Water .....	7732-18-5
NJ TSRN .....	100555-5001
NJ TSRN .....	100555-5002
Nonyl phenoxy poly (ethylene oxy) ethanol .....	9016-45-9

## Ecological Information:

- Biodegradable Surfactants
- Neutral pH
- Contains no Phosphorus
- Low VOC



## End-Use Rating

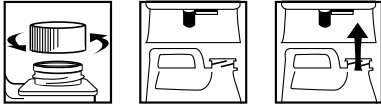
0	1	2	3	4
Minimal	Slight	Moderate	Serious	Severe
Minimo	Minimo	Moderar	Grave	Drastico



## Use Information:

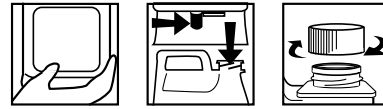
Always dust mop the floor first. Remove gum, labels, and other attached soil deposits with a putty knife or long handled scraper. The SHURFIL™ bottle is preset to deliver a 1:128 ratio of UHS Combo Cleaner/Maintainer solution to any appropriate end use container

### LOADING INSTRUCTIONS



DILUTIONS DILUCIÓN	
HIGH	128
LOW	128

### UNLOADING INSTRUCTIONS



### SHURFIL™ LOADING INSTRUCTIONS:

1. **REMOVE CAP**
2. **POSITION BOTTLE** with spout on right.
3. **INSERT BOTTLE** into dispenser until firmly seated.

### SHURFIL™ UNLOADING INSTRUCTIONS:

1. **GRASP** bottle by bottom.
2. **MOVE** release lever to right and pull bottle from unit.
3. **REPLACE CAP** and store bottle.

### DIRECTIONS FOR USE:

#### AUTOSCRUB CLEANING

1. **DILUTE** at 1 ounce per gallon (1:128 ratio) of cold water.
2. **CLEAN:** Scrub with red pad. Apply UHS Combo, scrub and pick up in one operation. Rinsing not required.
3. **PICK UP TRAILS:** Use clean water and mop/bucket to pick up any trails left from autoscrubber.

### First Aid:

**If in eyes or on skin,** immediately flush with plenty of water. Get medical attention if irritation persists. **If swallowed,** get medical attention. NEVER GIVE ANYTHING BY MOUTH TO AN UNCONSCIOUS PERSON.

### Handling and Storage:

**SUGGESTED STORAGE TEMPERATURE:** Store inside at 40-90°F.

**SPECIAL HANDLING AND STORAGE:** Handle in accordance with good industrial hygiene and safety practices. These practices include avoiding unnecessary exposure and removal of material from eyes, skin and clothing. Store in a cool, dry, ventilated area. **Protect from freezing.** Thoroughly rinse empty containers.

**KEEP OUT OF REACH OF CHILDREN**

### INSTRUCCIONES DE CARGA:

1. **QUITE LA TAPA.**
2. **POSICIONE LA BOTELLA** con el pico a la derecha.
3. **INSERTE LA BOTELLA** dentro del dosificador y fíjela bien.

### INSTRUCCIONES DE DESCARGA:

1. **AGARRE** la botella por la base.
2. **AFLOJE LA PALANCA** de soltar hacia la derecha y jale la botella hacia abajo.
3. **TAPE LA BOTELLA** y guárdela.

### INSTRUCCIONES PARA SU USO:

#### LIMPIENZA CAN FROTADORA AUTOMÁTICA

1. **DILUIR** a 1 onza por galón (proporción 1:128) de agua fría.
2. **LIMPIAR:** Estregar con una almohadilla roja. Aplicar UHS Combo, estregar y levantar en una sola operación. No hace falta enjuagar.
3. **LEVANTAR RASTROS:** Usar agua limpia y estropajo/cubo para levantar todo rastro de la frotadora automática.

### Personal Protection:

**Respiratory Protection:** Not needed under normal conditions.

**Ventilation:** Use with adequate ventilation.

**Eye Protection:** Safety glasses are optional.

**Protective Gloves:** Protective gloves are optional.

**Other Protective Clothing or Equipment:** Wear clothing as necessary to prevent skin contact.

### Transportation Information:

**U.S. DOT - Proper Shipping Name:** Not-Restricted

**Marine Pollutant:** No